



HERANBA



***INNOVATIVE HEALTH SOLUTIONS
FOR A BETTER TOMORROW***

MANUFACTURING PLANTS



Technical Units : 3 | ISO 14001:2015 EMS | ISO 9001:2015 QMS & GMP Certified

VAPI, GUJARAT



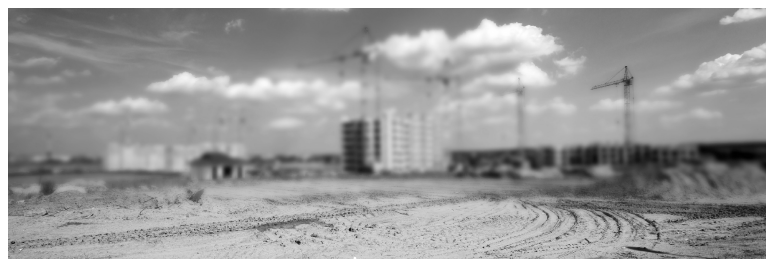
Technical Units : 2 | Formulation Unit : 1

SAYKHA, GUJARAT



Technical Units : 3 | Formulation Unit : 1 | ISO 9001:2015 QMS

SARIGAM, GUJARAT



Technical Units : 1 (UPCOMING) | OPEN FOR CONTRACT MANUFACTURING

SAYKHA, GUJARAT



Technical Units : 2

HOPL - SARIGAM, GUJARAT



R&D CENTRE

BOISOR, MAHARASHTRA

Vapi, Gujarat (Technical & Intermediates) : Heranba has 3 separate manufacturing units at Vapi, Gujarat. For manufacturing various technical grade Synthetic Pyrethroids and its intermediates like Cypermethrin, Alphacypermethrin, Deltamethrin and Permethrin, Bromobenzene, Metaphenoxy Benzaldehyde (MPBD), Metaphenoxy Benzyl Alcohol (MPBAL), along with other products like Profenophos, Temephos, Tricyclazole, Thiamethoxam, Lambdacyhalothrin, Tebuconazole, Hexaconazole.

Sarigam, Gujarat (Formulation Unit) : An ISO 9001 : 2015 certified unit with modern formulation and packing facility capable of handling large capacities of liquid, powders & granuels formulations. It specializes in various formulations such as EC, SC, CS, FS, WP, ZC, WG to cater to the Indian market as well as for exports.

Saykha Gujarat (Formulation Unit) : Heranba has also recently acquired two additional plots at Saykha Industrial Estate, Gujarat of which one plot has already received Consent to establish a Plant from the Gujarat Pollution Control Board for manufacturing of Agro Chemicals.

The Manufacturing facilities are well-equipped with adhering to all safety and environmental standards with an in-house R&D and Quality control Laboratory.

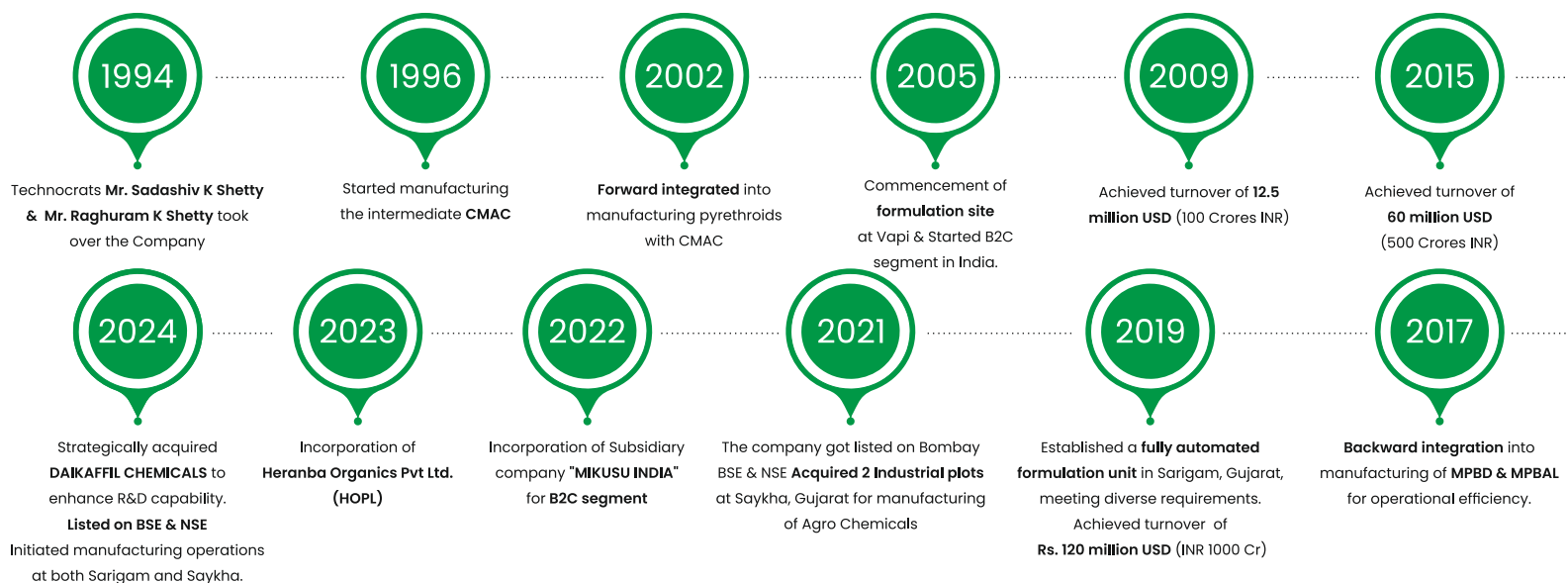
ABOUT US

Established in the year **1992**, Today, **Heranba** is one of the largest manufacturers of Synthetic Pyrethroids and its intermediates in India. Heranba's philosophy is to provide innovative quality products to improve the quality of human life. This is achieved by its research and product development divisions, where "Chemistry is at its Best".

OUR MISSION

HERANBA's mission is to improve Crop Productivity and Public Health. It is committed to the wellness of world citizens. The passion is to provide innovative products to farmers that enhance farm efficiency and offer Crop Solutions

JOURNEY



EXPORTS TO MORE THAN 65+ COUNTRIES

HERANBA'S COMMITMENT TO SUSTAINABILITY AND INNOVATION

We recognize that our industry has a significant impact on the environment, and it is our responsibility to mitigate this impact through sustainable practices. At the core of our approach is a steadfast commitment to sustainability.

This commitment is reflected in every aspect of our operations, from the sourcing of raw materials to the disposal of waste products.



Green Chemistry

A pivotal aspect of our innovation strategy is the adoption of green chemistry principles. We focus on designing processes that reduce or eliminate the use and generation of hazardous substances. By incorporating these principles into our research and development processes, we create products that are not only effective but also safer for both people and the environment.

Innovative Product Development

Innovation is at the heart of our approach to sustainability. We are continually exploring new technologies and methodologies to create products that offer superior performance while being kinder to the environment.

Sustainable Packaging

Packaging is a significant contributor to environmental waste, and we are addressing this challenge head-on. With efforts to minimize waste and reduce our carbon footprint.

As we move forward, we remain dedicated to pushing the boundaries of innovation and sustainability. We believe that by working together, we can create a world where manufacturing Pest Management chemicals is synonymous with environmental stewardship and sustainable progress.

Deltaflow[®]

Deltamethrin 2.5 % SC



DELTAFLOW is used as residual spray for control of mosquitoes, cockroach housefly, spider and all other crawling and flying insects at very low dose also used for bednet impregnation.

FEATURES :

- Certified with BIS (ISI) Mark.
- HACCP Certified.
- Is safe to non-target animals and human beings.
- Has broad spectrum activity against household pests which are resistant to other conventional insecticides.
- Is odourless, non-staining, non-greasy and non-irritant..
- Long lasting residual effect.
- Cost effective due to low dosage.
- WHO Approved.

MODE OF ACTION :

Non systemic insecticides with contact action fast acting.

DOSAGE :

Surface Treatment -

10 ml / lit of water.

Synthetic Net -

10 ml / 500 ml water for single net.

15 ml / 750 ml water for double net.

Cotton Net -

10 ml / 2 litre water for single net.

15 ml / 3 litre water for double net.

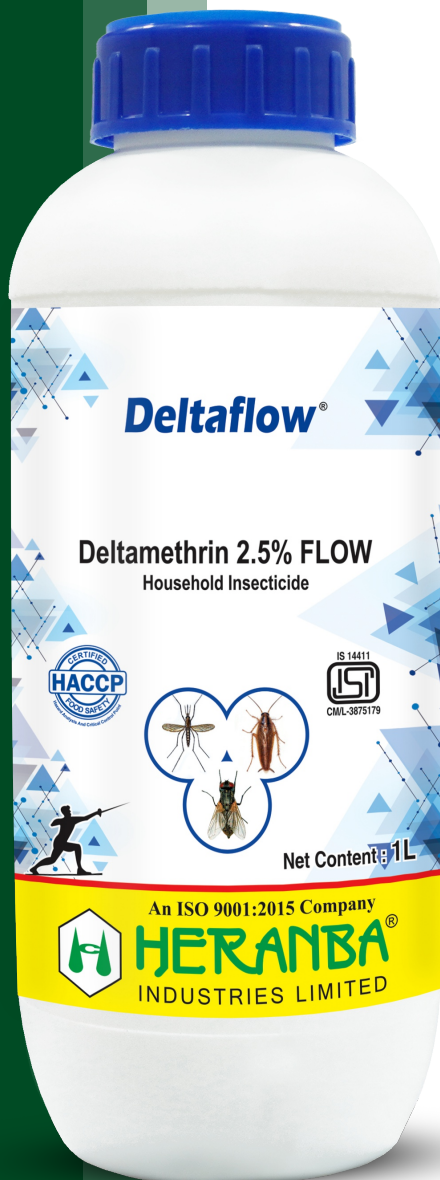
ANTIDOTE :

No specific antidote is known. Treat symptomatically.

Antihistamines may be given to control allergies.

PRESENTATION :

100 ml, 250 ml, 1 Ltr.



General insect control



Spectra

Alphacypermethrin 10 % SC



SPECTRA provides control over mosquitoes, houseflies and cockroaches for a long period of time. It is widely used in various areas such as institutional premises, residential buildings and domestic settings. Further, it can also find its application in hospitals, kitchens, restaurants, food processing and food storage areas.

FEATURES :

- WHO Approved.
- HACCP Certified.
- Has long residual action
- Odourless and non-staining
- Is odourless, non-staining, non-greasy and non-irritant..
- Is cost effective insecticide.

MODE OF ACTION :

It is non-systemic insecticide with contact & stomach action. It acts on very low dose

DOSAGE :

10 – 20 ml / Litre of water to cover 50 sq. mt area.

ANTIDOTE :

There is no specific Antidote, Treat symptomatically

PRESENTATION :

100 ml, 1 Ltr.



General insect control



Baxstorm

Beta Cyfluthrin 2.45% SC



BAXSTORM contains Beta Cyfluthrin 2,45% SC and is useful for control of insect pests Like houseflies, cockroaches and mosquitoes in houses. It has a broad spectrum activity and used for control of insect pests in household and commercial premises.

FEATURES :

- HACCP Certified.
- Safe to Non-Target animal and Human Beings.
- Long Lasting residual effect.
- Highly effective.
- Odourless, non-staining, non-greasy, non-irritant.
- Cost effective due to Low dosage.

MODE OF ACTION :

Non-Systemic insecticide with contact and stomach action.

DOSAGE :

20 ml of Baxstorm in 1L of water and spray the solution uniformly over 20 sq. mt of porous surfaces and 40 sq.mt. of non-porous surfaces.

ANTIDOTE :

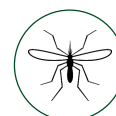
No specific antidote. Treat Symptomatically.

PRESENTATION :

100 ml, 1 Litre.



General insect control



Control X

Lambdacyhalothrin 2.43% CS



Control X has advanced CS (Micro Encapsulation) formulation of the 4th generation synthetic pyrethroid.

Control X can be use for indoor & outdoor in and around the building , commercial, residential premises.

It is useful for control of insect pest like Cockroach, mosquitoes, flies.

FEATURES :

- HACCP Certified.
- Micro-Encapsulation.
- Broad Spectrum with long lasting residual effect.
- Odorless , non-staining, non-greasy.
- Gives knock down action.
- Water based, safe & use convenience.

MODE OF ACTION :

Non-Systemic insecticide with contact & stomach action.

DOSAGE :

20 ml of Control X in 1 L of water.

ANTIDOTE :

No Specific antidote. Treat Symptomatically.

PRESENTATION :

100ml, 1 Litre.



General insect control



Stormguard™

Imidacloprid 21 % + Beta cyfluthrin 10.5 % SC)



Stormguard is dual active substance with symbiotic effect and superlative performance.

It can be use for indoor & outdoor in and around the building , commercial, residential premises.

It is useful for control of insect pest like bedbug, Cockroach, houseflies.

FEATURES :

- HACCP Certified.
- Devastating impact.
- Imidacloprid provides a long lasting residual effect.
- Betacyfluthrin provides a rapid knockdown effect.
- Odourless , non-staining, non-greasy.
- Restores the effectiveness of a substance.

MODE OF ACTION :

Non-Systemic insecticide with contact & stomach action.

Imidacloprid inhibits the action of acetylcholine a neurotransmitter essential for insect nervous system function, the disruption of neurotransmission ultimately leads to death of the insect.

Beta Cyfluthrin disrupts the normal transmission of nerve impulses, leading to insect death.

DOSAGE :

4 ml of Stormguard in 1 L of water to cover 20 sq.mt. area.

ANTIDOTE :

No Specific antidote. Treat Symptomatically.

PRESENTATION :

50ml, 500 ml & 1 Ltr.

General insect control



Fluemetrix™

Cyfluthrin 5% EW



Fluemetrix is used to control of cockroaches, houseflies, and mosquitoes. It is widely used in various areas such as residential & institutional premises, restaurants, hotels, food processing areas.

It is also use an indoor residual spray for bed net impregnation to control of adult mosquitoes.

FEATURES :

- HACCP Certified.
- It has long residual action.
- Safe to non-targeted animal and human beings.
- It has broad spectrum activity.
- It is odourless, non-staining.
- Cost effective due to low dosage.

MODE OF ACTION :

It is non-systemic insecticide with contact action.

DOSAGE :

- *For residual spray.*

8 ml of Flumetrix dilute in 1 ltr of water. Spray 50 ml diluted solution per sq.mt area to cover 20 sq.mt area with 1 lit of diluted solution.

- *For bed net impregnation*

Calculate the bed net area and dilute 1 ml of formulation per sq. mt. of the calculated bed net area. For instance, if the bed net area is 10 sq. mt. then dilute 10 ml of Flumetrix or if the bed net area is 20 sq. mt. then dilute 20 ml of Flumetrix in the required quantity of water. Dip the bed net in the diluted solution and later dry the net in shade.

ANTIDOTE :

No specific antidote. Treat Symptomatically.

PRESENTATION :

100 ML, 1 LTR.



General insect control



FligonTM Plus

Diflubenzuron 20% + Deltamethrin 2 % SC



FLIGON PLUS is a combination of insecticide for control of household pests. The housefly spread all over the world as a commensal of humans. It is well known cosmopolitan insect pest of both farm and home. They breed on decaying and decomposing organic matter like foodwaste, carrion, feces, sugary substances, milk etc. Flies serve as mechanical vectors to over 100 pathogens, carrying them on their hairs, mouth parts, vomitus and feces, those causing diseases such as typhoid, cholera, salmonellosis, bacillary, dysentery, tuberculosis, anthrax etc.

FLIGON PLUS is effective on In Poultry manure, kitchen garbage, dumping areas, sewage and filth dumping aretc raw farm yard manure pits etc.

FEATURES :

- HACCP Certified Product.
- Safe to user and environment.
- Very low toxicity to bird and mammals.
- Fast activity with quick knock down action.
- Effectively control both maggot(larvae) and adults.
- Effect egg hatching.

MODE OF ACTION :

Non-systemic insect growth regulator with contact and stomach action
Diflubenzuron acts at egg hatching inhibits chitin formation in larvae and adult fly, resulting in death.
Deltamethrin is a contact and stomach action with fast acting and knockdown effect on adult houseflies and crawling insects.

DOSAGE :

1.5ml-2ml in 1 Ltr. of water to cover 2 sqm area.

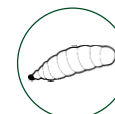
ANTIDOTE :

No specific antidote. Treat Symptomatically.

PRESENTATION :

500 ML, 1 Ltr.

General insect control



BloomTM

Clothianidin 50% WG



BLOOM is recommended for control of Cockroaches, Flies and Bedbugs. Bloom provides excellent result on Bedbugs. This neonicotinoid exhibits a potent systemic action and high insecticidal activity against sucking pests.

FEATURES :

- HACCP Certified.
- Broad Spectrum systemic insecticide
- Odorless
- Colorless
- Highly effective in countering pest resistance
- Effective in low doses

MODE OF ACTION :

Agonist of the nicotinic acetylcholine receptors affecting the synapses in the insect central nervous system.

DOSAGE :

1.6GM per Ltr of Water.

ANTIDOTE :

There is no known specific antidote. Treat symptomatically

PRESENTATION :

6 GM pouch.



General insect control



Protex

Propoxur 20% EC



PROTEX is a broad spectrum public health and pest control products for controlling crawling insects – Bedbugs, Cockroaches, Fleas, Ticks, Crickets, Woodlice, Mites, Silverfish, Spiders, Ants & flying insects– Mosquitoes, Flies, etc.

FEATURES :

- Certified with BIS (ISI) Mark.
- HACCP Certified.
- Safe to Non Target animal and Human Beings.
- Long lasting residual effect.
- Highly effectiveness
- Very strong flushing action.
- Excellent tank mix partner.
- Rapid knockdown action

MODE OF ACTION :

Non- Systemic insecticide with contact and stomach action.

DOSAGE :

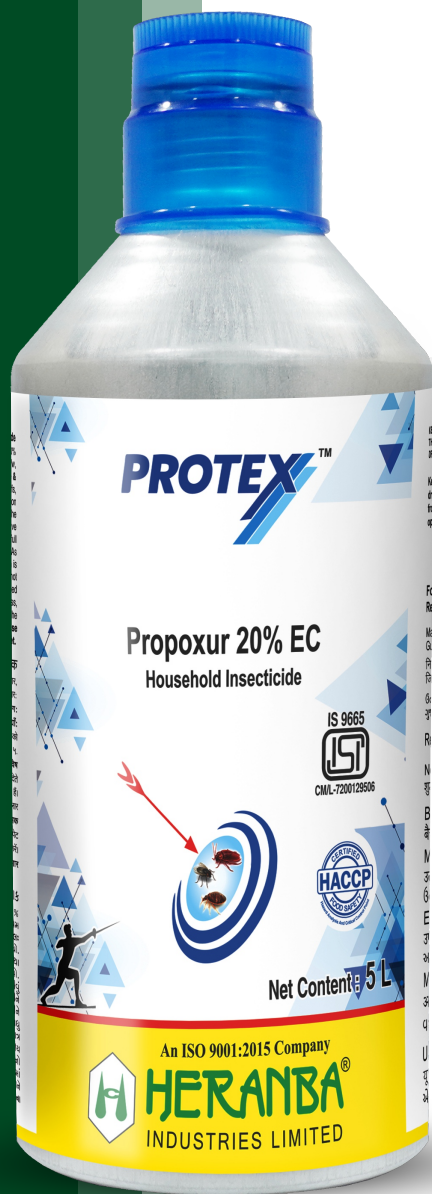
25-40 ml of Protex is to be diluted in 1 Ltr. of water and sprayed at the rate of 50 ml solution per sq. mt.

ANTIDOTE :

1. Antropinize the patient immediately and maintain full atropinization repeated dose of 2-4 mg of a atropine sulphate intravenously at 5 to 10 minutes interval. As much as 25 to 50 gm of atropine may be required in a day. The need for further atropine administration is guided by the continuance of symptoms. Extent of salvation is a useful criterion for dose adjustment.
2. Do not use any oxyne such as 2 PAM.
3. Artificial respiration may be given, if needed.

PRESENTATION :

100 ml, 1 Ltr., 5 Ltr., 20 Ltr..



General insect control



Roachgone Gel

Fipronil 0.05 % Gel



ROACHGONE GEL is a household insecticide gel for control of American and German cockroaches. The product is safe for use in sensitive areas and around non target animal.

RECOMMENDED PREMISES :

All commercial and residential premises .i.e. Hospitality Industries, Hospitals, Warehouse,Factories, Food handling areas, Textile Industries, Kitchen, Corporate Offices etc.

FEATURES :

- HACCP Certified.
- Gel baits ate attractive to most cockroaches species.
- Safe and easy to use products.
- RTU product.
- Highly effective on cockroaches.

MODE OF ACTION :

Stomach poison.

DOSAGE :

For German Cockroaches should be 0.25-0.50g/m².For American Cockroaches should be 0.50-1.00 g/m².

ANTIDOTE :

There is no specific antidote. Treat Symptomatically.

PRESENTATION :

Cartridges 35 gm.



General insect control



Mantra[®] Gel

Imidacloprid 2.15 % Gel



MANTRA GEL is a new technology product, specific for cockroach control. The unique application method make it a suitable product for managing cockroaches in vending machine. Mantra Gel contains imidacloprid 2.15 % as the active ingredient and food bait matrix which attracts the cockroaches. Mantra Gel has to be applied by the unique applicator gun and needle. Mantra Gel has attractant that lures cockroaches ensuring its consumption which kills cockroaches.

MODE OF ACTION :

Stomach poison.

DOSAGE :

For an effective control, apply 3 to 4 gel spots / sq. cm. area and each gel spot with 3–5 min diameter in size. If cockroaches are seen reapply gel. Do not apply in areas which are frequently washed

ANTIDOTE :

There is no known specific antidote. Treat symptomatically

RECOMMENDATION :

This gel is recommended for effective control of German and American cockroaches in house. Cockroaches are attracted to the gel and after feeding, the cockroaches are killed. Application of Gel is convenient for use.

PRESENTATION :

Cartridges 35 gm.



General insect control



Aquaflow™

Deltamethrin 2% EW



AQUAFLOW is a space spray concentrate containing Deltamethrin 2% EW. It is water based formulation used for the control for adult mosquitoes in public health. Recommendation for use: It is recommended for outdoor & indoor application for control of adult mosquitoes causing malaria, filaria & dengue etc.

FEATURES :

- HACCP Certified
- Lower phytotoxicity, non-flammable, and no flashpoint concerns.
- Easy to handle, with a reduced environmental impact.
- Water-based space spray technology.
- Provides knockdown and long residual activity.
- High efficacy against pests.
- Eradicates the use of diesel, making it cost-effective.

MODE OF ACTION :

Non systemic insecticide with contact & stomach action. It acts on very low dose

DOSAGE :

1. In Thermal Fogger-Dilute of 25 ml of Aquaflow in 5-10 lit of water and apply this solution to cover one hectare area.
2. In Ultra low volume application- Dilute 50 ml of Aquaflow in 1 lit of water and apply this solution to cover one hectare area.

ANTIDOTE :

Treat Symptomatically

PRESENTATION :

1 Ltr.



Space Spray



Delfog[®]

Deltamethrin 1.25% ULV



DELFOG is used to control adult mosquitoes and cuts down the transmission cycle. They are safe for humans and animals due to low toxicity. It can be applied using ULV or thermal fogging as space sprays. Specially formulated for diesel, oil and kerosene.

FEATURES :

- WHO Approved
- Certified with BIS (ISI) Mark.
- HACCP Certified.
- Is used for control of mosquitoes.
- Effective against vector of human disease (Anopheles, Culex and Aedes)
- Suitable for use both Indoors and Outdoors in vector control and in area where flying insects are a nuisance or may cause health risk.
- Extremely low dosage.
- It has knock down effect.

MODE OF ACTION :

DELFOG poisoning occurs through cuticular penetration or oral uptake.

DOSAGE :

- *Fogging - Thermal Fogging :*
50 ml / 10 Ltr.of diesel or kerosene to cover 1 hectare area.
- *Fogging - Ultra Low Volume :*
50 ml / 5 Ltr. of Diesel or kerosene to cover 1 hectare area.

ANTIDOTE :

No specific antidote is known. Treat symptomatically. Antihistamines may be given to control allergies.

PRESENTATION :

15 ml, 50 ml, 1 Ltr.

Space Spray



Strikon™ 10 CS

Lambdacyhalothrin 9.7 % CS



STRIKON 10 CS is an advanced CS (Micro-Encapsulation Suspension Technology) formulation of the 2nd generation synthetic pyrethroid.

STRIKON 10 CS is advanced protection technological product; prevents the active ingredient from breakdown in heat and UV exposure to reduce retreatments.

STRIKON 10 CS is a contact, stomach and repellent property insecticide. It gives knockdown and long residual activity by disrupting the function of neuron by interacting with sodium channel in nervous system.

STRIKON 10 CS can be used indoors and outdoors in and around the buildings, Commercials and Residential premises, Hospitality Industries, Poultry farms ,Warehouses, etc.

FEATURES :

- HACCP Certified
- Micro-Encapsulation Technology.
- Water based, so good safety and use convenience.
- Good efficacy, highly efficacious.
- Controlled or Slow release of active ingredient
- Reduced degradation of active ingredient.
- Uniform suspension upon dilution.
- Used in indoor residual spray (IRS).
- Efficacy in malaria vector control.
- Has low odour and non-staining properties.
- Safe to handle.
- Gives knock down and long residual activity.

MODE OF ACTION :

Non-systemic insecticide with contact and stomach action with repellent properties. Acts on the nervous system of insects and disturbs the function of neurons by interaction with sodium channel.

DOSAGE :

12.5ml of Strikon 10 CS is to be diluted in 1 Ltr. of water to cover 500 sq.m. area

ANTIDOTE :

No specific antidote is known. Treat symptomatically.

PRESENTATION :

500ml, 1 Ltr.

Indoor Residual Spray (IRS)



Proton[®]

Lambdacyhalothrin 10% WP



PROTON is high performance synthetic pyrethroids recommended & approved by Pesticide evaluation Scheme for usage against Mosquitoes. Its is also used to control cockroaches, House Flies & other Crawling Insects.

FEATURES :

- Certified with BIS (ISI) Mark.
- HACCP Certified.
- Has strong contact and stomach action and also has repellent properties.
- Rapid knockdown of pests that come in contact with treated surface.
- It disrupts normal functioning of nervous system in insects and causes paralysis and death.

DOSAGE :

Adult Mosquitoes

125 gms / 10 Ltr. of water to cover 500 Sq. mt. area as residual spray to control vectors.

Cockroach & Houseflies

100 gms / 10 Ltr. of water to cover 500 sq.mt. area as residual spray to control vector

ANTIDOTE :

No Specific Antidote.

PRESENTATION :

10 Kgs HDPE DRUM containing 62.5 gms x 160 water soluble sachets.

Indoor Residual Spray (IRS)



Delthrin[®]

Deltamethrin 2.5% WP



DELTHRIN is high performance synthetic pyrethroid used for indoor Residual Spray (IRS) for Mosquitoes, Flies and cockroaches as well as Effective against Stored Grain Pest I.e. Weevils, Beetles, Moths etc.

FEATURES :

- HACCP Certified.
- Certified with BIS (ISI Mark) and WHO Approved.
- Good chemical stability

MODE OF ACTION :

Non Systemic insecticide with contact and stomach action. Fast acting.

DOSAGE :

For Indoor Residual Spray (IRS)

25 - 50 gms of Formulation in 1.5 - 2.5 ltr of water.

For Stored Grain Pest

120 gm of delthrin is to be thoroughly mixed in 3 ltr of water to be covered 100 sq. m. area.

ANTIDOTE :

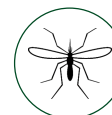
No specific antidote is known. Treat symptomatically. Antihistamines may be given to control allergies.

PRESENTATION :

1Kg, 25 Kg.



Indoor Residual Spray (IRS)



Alpha Shakti[®] 5 WP

Alphacypermethrin 5% WP



ALPHA SHAKTI is a broad spectrum insecticide containing 5% Alpha Cypermethrin, an highly effective public health insecticide for control of adult mosquito.

FEATURES :

- WHO Approved.
- HACCP Certified
- Its control wide range of sucking pest & long resident action.
- Certified with BIS (ISI) Mark

MODE OF ACTION :

Non- Systemic insecticide with contact and stomach action.
It also acts on the central and peripheral nervous system in very low doses

DOSAGE :

Adult Mosquitoes
Double cycle application to be repeated afyter 3 month.
250 gms/10 litre of water to cover 500 Sq. meter area.
Single Cycle application
400 gms/ 10 litre of water to cover 500 Sq. meter area.

ANTIDOTE :

There is no specific Antidote, Treat symptomatically

PRESENTATION :

1Kg, 25 Kg.

Indoor Residual Spray (IRS)



Reprove™

Fipronil 2.92% EC



REPROVE is a pesticide formulation containing Fipronil 2.92% EC as the active ingredient.

Reprove is a broad-spectrum insecticide widely used in public health applications for the control of various species of termites in building pre & post construction treatment.

FEATURES :

- Effective insect control against Termites and soil-dwelling insects
- It acts on the central nervous system of insects, leading to paralysis and eventual elimination.
- Non repellent & odorless termiticide.
- Long lasting protection.
- Broad spectrum of activity
- Strong domino effect which helps in effective transmission in termite control
- It can be used in public areas to combat pests effectively.

MODE OF ACTION :

Fipronil 2.92% EC is a broad-spectrum insecticide that works by targeting the central nervous system of insects. It acts by selectively binding to gamma-amino butyric acid (GABA) receptors, which are important in transmitting nerve impulses in insects. By binding to these receptors, fipronil disrupts the normal functioning of the insects' nervous system, leading to hyper excitation of nerve cells and eventually causing paralysis and death.

DOSAGE :

15 ml /Ltr of water for Post Construction.

25 ml/ Ltr of water for Pre Construction.

Anti -termite treatments should be carried out as per BIS 6313:2001.

PRESENTATION :

100 MI, 250 ML, 500 MI , 1 Ltr & 5 Ltr.



Termiticide



Mantra[®] TC

Imidacloprid 30.5% SC



MANTRA TC is a new generation systemic and contact Insecticide which is a very effective pre & post construction treatment against Termites

FEATURES :

- Certified with BIS (ISI) Mark
- HACCP Certified.
- Odorless & low toxicity toward People.
- Can be used both Pre & Post Construction.
- Ability to Spread in all direction of soil ensuring thorough soil coverage

MODE OF ACTION :

Systemic insecticide with contact & stomach action

DOSAGE :

2.1 ml/ lit of water for the control of Termite (for both Pre & Post Construction). Treatment should be as per IS 6313 (Part - 2) : 2001 for preconstruction chemical treatment and IS 6313 (Part - 3) : 2001 for post construction treatment of the existing building.

ANTIDOTE :

There is no known specific antidote.
Treat symptomatically.

PRESENTATION :

250 ml, 1 Ltr. & 5 Ltr..



Termiticide



TERMIFINN-TC[®]

Bifenthrin 2.5% EC



Termifinn-TC is an insecticide effective for termite control. For use in pre and post construction, anti termite treatments.

FEATURES :

- HACCP Certified.
- Its controls termites by contact action and provides knockdown effect.
- Is safe and environment friendly product.
- Provides double protection by acting as a repellent barrier and also kills live termites.
- Is tolerant to pH variation. It can be applied to acidic as well as alkaline soil.

MODE OF ACTION : Contact and Stomach action

DOSAGE :

1. **Pre and Post Construction.** Termifinn - TC shall be applied at 0.05% a.i. concentration. i.e. 20.00ml formulated product diluted in 1 litre of water for the control of termites in building during pre and post construction. Treatment should be as per IS 6313 (Part - 2) : 2001 for preconstruction chemical treatment and IS 6313 (Part - 3) : 2001 for post construction treatment of the existing building.

2. **Recommendation** for use of control of Wood borer (Powder Post Beetle) in plywood, veneer and wood:

Use	Method of application	Dosage (a.i.)	Dilution
Plywood	Glue Line Poisoning Dipping	10g/cubic meter of wood 0.025% Solution	400ml formulation per cubic meter of wood. Mix 1 Lit of Formulation in 99 Lit of Water to make 0.025% Solution
Venner	Dipping	0.025% Solution	Mix 1 Lit of Formulation in 99 Lit of Water to make 0.025% Solution
Wood	Dipping / Brushing	0.025% Solution	

ANTIDOTE :

Treat Symptomatically and Supportively.

PRESENTATION :

1 Lit, 5 Ltr, 20 Ltr and 200 Ltr.



Termicide



Heraban-TC[®]

Chlorpyrifos 20% EC



HERABAN-TC is the insecticide that is effective against termites control. Heraban- TC is creating repellent barrier in the soil preventing termites to make entry into the building.

FEATURES :

- Certified with BIS (ISI Mark).
- HACCP Certified..
- It is widely used in Pre and Post construction anti termite treatment.
- Quick knockdown with some residual control.
- Cost Effective broad - spectrum insect control.

MODE OF ACTION :

Non - Systemic. Insecticide with contacts, stomach & respiratory action

DOSAGE :

Heraban-TC recommended dosage of 50 ml per litre of water

ANTIDOTE :

1. Atropinize the patient immediately and maintain full atropinization by repeated doses of 2 to 4 mg. of atropine sulphate intravenously at 5 to 10 minutes interval. As much as 25 to 50 mg of atropine may be required in a day. The need for further atropine administration is guided by continuance of symptoms. Extent of salvation is a useful criterion for dose adjustment.
2. Dissolve 1-2 gm of 2 PAM in 10 ml distilled water and inject intravenously very slowly for 10 - 15 minutes.

PRESENTATION :

100 ml, 250 ml, 500 ml, 1 Litre, 5 Ltr., 20 Ltr., 200 Ltr



Termiticide



FluronTM

Diflubenzuron 25% WP



FLURON is new type of Insect Growth Regulator its Interferes in insect cuticle (exoskeleton) formation of chitin during the moulting process of insect larvae. it is recommended for control of mosquito's larvae i.e, Aedes, Anopheles and Culex.

FLURON is effective against Housefly maggots in poultry manure, garbage, filth and dumping areas. Also In some cases ovicidal effect has been found of this product.

FEATURES :

- Certified with BIS (ISI) Mark.
- Certified with HACCP
- It is safe towards Non-target organism
- Its acts at time of insect moulting or at hatching of eggs

MODE OF ACTION :

Non systemic Insect Growth Regulator with contact and stomach action. Acts at time of Insect moulting or at hatching of eggs.

DOSAGE :

For Mosquitoes Larvae Control-

- Clear Surface Water-100-200gm per Hectare (10gm per 10 ltr of water)
- Polluted Surface Water-200-400gm per Hectare (20gm per 10 ltr of water)
- Sewage pits, Soak pits, Latrines, Septic tanks- (4 gm per 1000 ltr of water).

For Fly Maggots Control-

- 5 gm of Fluron in 5 ltr of water to cover 10 sq.mt area.

ANTIDOTE :

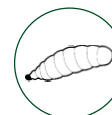
No Specific Antidote

PRESENTATION :

500 Gm



Larvicide



Fluron GR

Diflubenzuron 2% GR



FLURON GR is new type of Insect Growth Regulator its interferes in insect cuticle (exoskeleton) formation of chitin during the moulting process of insect larve. It is recommended for control of mosquitoes larvae in Drains, Disused Wells, Cesspit and Pools.

FEATURES :

- HACCP Certified
- It is safe Non-target organism
- Ready to use also be mixed with water & applied by hand

MODE OF ACTION :

Non systemic Insect Growth Regulator with contact and stomach action. Act at time of insect moulting or at hatching of eggs.

DOSAGE :

1.5-3 Kg Fluron GR per Hectare

ANTIDOTE :

No antidote is known. Treat symptomatically

PRESENTATION :

1 Kg



Larvicide



LarvoxTM

Pyriproxyfen 0.5% GR



LARVOX is an insect growth regulator with unique mode of action. It affects the physiology of of morphogenesis, reproduction & embryogenesis of insects. Insecticide formulation contains Pyriproxyfen as an active ingredient used against larvae of mosquito vector.

FEATURES :

- HACCP Certified.
- Broad spectrum of activity against all mosquito larvae.
- Unique mode of action.
- Highly effectiveness
- Long residual action.
- Cost effective due to low dosage.

MODE OF ACTION :

Pyriproxyfen acts as a juvenile hormone (JH) mimic, artificially maintaining the regulation of moulting a er natural JH levels have dropped; this arrests the development of immature insect stages, which ultimately die.

DOSAGE :

1. Breeding habitat: Clean water/domestic containers Dosage/ha: A.I. (g): 10 (=0.01 ppm) Dosage/ha: Formulation (gm): 2000 gm.
2. Breeding habitat: Polluted/peri domestic breeding Dosage/ha: A.I. (g): 20 (=0.02 ppm) Dosage/ha: Formulation (gm): 4000 gm

ANTIDOTE :

If swallowed, refer to the nearest doctor immediately. Treat symptomatically

PRESENTATION :

500 Gm.



Larvicide



Newron

Novaluron 10% EC



NEWRON is a chitin synthesis inhibitor that acts by both ingestion and contact. It has been used for controlling a variety of insect pests of field crops and of public health reported that Newron exhibited a high level of activity against Culex mosquitoes. Newron showed that exhibited long-term activity against Aedes aegypti in water-storage containers.

FEATURES :

- HACCP Certified.
- Newron is a mosquito larvicide of the benzoyl urea family. It comes under IGR (Insect Growth Regulator) category of insecticide.
- Effective against all types of mosquito larvae i.e. Aedes, Anopheles and Culex.
- Effective on mosquito larvae which had developed resistance to certain old larvicide molecules.
- Low mammalian acute toxicity and has low risk to environment.
- safe towards Non-Target Organisms.
- A new & safe chemistry in EC Formulation for vector management programme

MODE OF ACTION :

Interferes with chitin synthesis in all larval stage of mosquitoes. It acts by ingestion & contact and causes abnormal endocuticular deposition and abortive moulting. Failure of cuticle to develop fully resulting into deformed pupae.

DOSAGE :

Clean Water : 300ml of formulation per hectare (1.5ml/liter of water)
Frequency: once in 12 week

Polluted water : 600ml of formulation per hectare (3ml/liter of water) Frequency:
Once in 6 week

ANTIDOTE :

No specific antidote. Treat Symptomatically.

PRESENTATION :

1 Litre.



Larvicide



Temper[®] EC

Temephos 50% EC



TEMPER EC is organophosphate insecticides which is very effective for the control of mosquito's larvae. It is widely used in public health programs.

FEATURES :

- HACCP Certified
- Certified with BIS (ISI) Mark
- Low toxicity to water species and mammals
- It controls larvae of Anopheles, Culex and Aedes and dramatically reduces mosquito population, in treated areas.
- Environmental friendly larvicide.
- Quick Action

MODE OF ACTION :

It affects the central nervous system through inhibition of cholinesterase. In larvae, this results in death before reaching the adult stage.

DOSAGE :

Clear Water - 2.5 - 5ml / 10 ltr of water.

Moderately polluted water - 7.5 - 10 ml / 10 ltr of water.

Highly polluted water - 12.5 - 20 ml / 10 ltr of water.

ANTIDOTE :

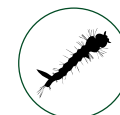
1. Atropinize the patient immediately and maintain full atropinization by repeated doses of 2 to 4 mg. of atropine sulphate intravenously at 5 to 10 minutes interval. As much as 25 to 50 mg of atropine may be required in a day. The need for further atropine administration is guided by continuance of symptoms. Extent of salvation is a useful criterion for dose adjustment.
2. Dissolve 1-2 gm of 2 PAM in 10 ml distilled water and inject intravenously very slowly for 10 - 15 minutes.

PRESENTATION :

1 Ltr, 5 Ltr, 20 Ltr



Larvicide



Temper® SG

Temephos 1% SG 

TEMPER SG is the safest mosquito larvicide that is highly effective against larvae of all species of mosquito. It can be used in a variety of breeding sites i.e. in potable clean water to highly polluted water. It contains 1% Temephos, an organophosphate group of insecticides, as an active ingredient. Temper SG is safe to human and other non-target animals.

MODE OF ACTION :

Temper SG produces sign and symptoms typical of cholinesterase exposure, but mortality does not occur unless very large dose of the compound is administered. Temper SG acts as a contact poison. Once applied to breeding site, it spreads well within the water body and stays effective for one week.

DOSAGE :

- Clear Water - 5 - 10 Kg / hectare
- Moderately polluted water - 10-20 Kg / hectare
- Highly polluted water - 20-50 Kg / hectare

ANTIDOTE :

1. Atropinize the patient immediately and maintain full atropinization by repeated doses of 2 to 4 mg. of atropine sulphate intravenously at 5 to 10 minutes interval. As much as 25 to 50 mg of atropine may be required in a day. The need for further atropine administration is guided by continuance of symptoms. Extent of salvation is a useful criterion for dose adjustment.
2. Dissolve 1-2 gm of 2 PAM in 10 ml distilled water and inject intravenously very slowly for 10 - 15 minutes

PRESENTATION :

1 Kg, 25 Kg, 40 Kg.

Larvicide





TEMEPHOS 1% SG LARVICIDE

TEMEPHOS 1% SG LARVICIDE

Chemical Composition: 100% Active. Content: 99% water, 1.01% Temephos. Emulsifier: 1.00% water, Absorbent Diatomaceous 2.50% w/w, inert carrier sand 12.2%. Total: 100.00% w/w. Precaution: Wear gloves, wear protective glasses and face shield when handling. Wash hands and exposed skin before meals and after work. **Antidote:** Atropinize the patient immediately by repeated administration of atropine sulphate intravenously 2 to 4 mg. at 5 to 10 minutes interval. As much as 25 to 50 mg of atropine may be required in a day. The need for further atropine administration is guided by continuance of symptoms. Extent of salvation is a useful criterion for dose adjustment.

Mode of Action: It acts as a contact poison. Once applied to breeding site, it spreads well within the water body and stays effective for one week.

Dosage: Clear Water - 5 - 10 Kg / hectare
Moderately polluted water - 10-20 Kg / hectare
Highly polluted water - 20-50 Kg / hectare

Antidote: 1. Atropinize the patient immediately and maintain full atropinization by repeated doses of 2 to 4 mg. of atropine sulphate intravenously at 5 to 10 minutes interval. As much as 25 to 50 mg of atropine may be required in a day. The need for further atropine administration is guided by continuance of symptoms. Extent of salvation is a useful criterion for dose adjustment.
2. Dissolve 1-2 gm of 2 PAM in 10 ml distilled water and inject intravenously very slowly for 10 - 15 minutes

Presentation: 1 Kg, 25 Kg, 40 Kg.

टेमपर १% जी. जी.

सुरक्षा निर्देश

प्रयोग करने से पहले सुरक्षा निर्देश पढ़ें। सुरक्षा निर्देशों का पालन करें। सुरक्षा निर्देशों का पालन न करने से स्वास्थ्य और पर्यावरण को नुकसान हो सकता है।

डोस

सफाई पानी - 5 - 10 कि.ग्रा. / हेक्टेयर
मध्यम रूप से प्रदूषित पानी - 10-20 कि.ग्रा. / हेक्टेयर
उच्च रूप से प्रदूषित पानी - 20-50 कि.ग्रा. / हेक्टेयर

अन्तिमोद्योग

1. अट्रोपिन को तुरंत रोगी को देना और अट्रोपिन को बनाए रखना। अट्रोपिन को 5 से 10 मिनट के अंतराल पर 2 से 4 मी.ग्रा. अट्रोपिन सल्फेट इन्ट्रावेनसली देना। 25 से 50 मी.ग्रा. अट्रोपिन एक दिन में आवश्यक हो सकता है। अट्रोपिन की आवश्यकता को अट्रोपिन के प्रभावों द्वारा निर्धारित किया जा सकता है। अट्रोपिन के प्रभावों का आकलन करने के लिए अट्रोपिन के प्रभावों का आकलन करना एक उपयोगी मानक है।

2. 2 ग्राम 2 PAM को 10 मिली लिटर डिस्टिल्ड पानी में घोलें और 10-15 मिनट के लिए अट्रोपिन के प्रभावों के आकलन के साथ बहुत धीरे-धीरे इंजक्शन दें।

उपस्थिति

1 कि.ग्रा., 25 कि.ग्रा., 40 कि.ग्रा.

एक पैकेट में 100 ग्राम

एक पैकेट में 2500 ग्राम

एक पैकेट में 40000 ग्राम

HERANBA INDUSTRIES LIMITED

An ISO 9001:2015 Company

Rat Kill[®]

Bromadiolone 0.005% CAKE

HERANBA RAT KILL is a single dose anticoagulant rodenticide. It controls field and commensal rats when consumed by causing hemorrhage in the blood system. Place the cake and the burrows and at places frequented by Rodents and one application provides good control. Pre-baiting is not necessary. It contains Bromadiolone 0.005% as an active ingredient.

MODE OF ACTION :

Heranba Rat Kill dose not act as instant poison, thereby eliminating the entire colony of rats. A single rat after feeding on the first day dies on the 4th or 5th day depending on the intake. The internal bleeding due to the failure of producing vitamin K leads to loss of blood and hemorrhages leading to death.

RECOMMENDATION :

Heranba Rat Kill cake is recommended in paddy, wheat, gram, groundnut, sugarcane, coconut, residential premises and poultry farm for field rat and house rat..

ANTIDOTE :

Vitamin K If swallowed, induce vomiting administer. Repeat if necessary

PRESENTATION :

The product shall be available in 25 gm and 100 gm pouches.



Rodenticide



Other Products.

INSECTICIDES

CYPRA - Cypermethrin 10% EC

CYPRA PLUS - Cypermethrin 25% EC

JAYAM - Lambda cyhalothrin 5% EC

JAYAM PLUS - Lambda cyhalothrin 4.9% CS

MANTRA - Imidacloprid 17.8% SL

DELTAJET - Deltamethrin 2.8% EC

HERANIL PLUS - Fipronil 5% SC

SIGNOR - Permethrin 25% EC

VARDHAN - Chlorpyrifos 50% EC

EAGLE - Malathion 50% EC

PROMPT - Thiamethoxam 25% WG

CYPRA DUST - Cypermethrin 0.25% DP

GOLDSTAR - Acephate 75% SP

FINSTAR - Bifenthrin 10% EC

PARAM - Chlorpyrifos 50% + Cypermethrin 5% EC

VEERA - Lambda Cyhalothrin 2.5% EC

SARAG - Monocrotophos 36% SL

PROGRESS PLUS - Profenofos 40% + Cypermethrin 4%

PROGRESS - Profenofos 50% EC

ROXSTAR - Pyriproxifen 10% + Bifenthrin 10% EC

ROXY - Pyriproxifen 10% EC

RAMBALUX - Quinalfos 25% EC

PROMPT PLUS - Thiamethoxam 30% FS

ANIKA - Thiamethoxam 12.6% + Lambda Cyhalothrin 9.5% ZC

HERBICIDES

GLORY - Glyphosate 41% SL

GLORY - Glyphosate 71% SG

HERAQUAT - Paraquat Dicloride 24% SL

FUNGICIDES

MACAMBA - Carbendazim 12% + Mancozeb 63% WP

HERAZIM - carbendazim 50% WP

SULPHY - Sulphur 80% WG

TULIP - Thiophnate Methyl 70% WP

MASK - Tricyclazole 75% WP



Corporate Office

2nd Floor, A-Wing, Fortune Avirahi,
Jambli Gali, Jain Derasar Lane,
Borivali (w) Mumbai- 400092,
Maharashtra India

Tel No: + 91-22-50705050 / 2898 2133

Web: www.heranba.co.in

Email: phpsales@heranba.com



OUR CHANNEL PARTNER

